

## 中九龍幹線公眾參與活動 Central Kowloon Route Public Engagement Activity

- 專題討論 - 油麻地城市設計及油麻地警署的保育。活動詳情如下：

- **Specific Issues – Yau Ma Tei Urban Design and the Conservation of Yau Ma Tei Police Station.**  
Event details as follows:

目的 Objective: 討論油麻地區的城市設計及油麻地警署的保育 To discuss the urban design of Yau Ma Tei area and the conservation of Yau Ma Tei Police Station.

日期 Date: 2009年1月10日(星期六) 10 January 2009 (Saturday)

時間 Time: 下午2時30分至5時30分 2:30pm to 5:30pm

地點 Venue: 梁顯利油麻地社區中心(油麻地眾坊街60號)  
Henry G Leong Yau Ma Tei Community Centre  
(60 Public Square Street, Yau Ma Tei)



為方便活動安排，請預先登記。Please register in advance to facilitate arrangement.

電話 Tel: 2859 0101

電郵 Email: ckr@meinhardt.com.hk

我們將於下一期通訊，報告工作坊的情況。

We will report the details of the workshop in the next issue.

- 我們正籌備於**2009年2月7日(星期六)**舉行另一項公眾參與活動，就中九龍幹線於馬頭角及九龍灣水域的工程向公眾匯報進展，及收集公眾意見。活動詳情，請留意日後的中九龍幹線通訊及宣傳資料。
- **Event – We are arranging a public engagement event to be held on 7th February 2009 (Sat) to report progress and gather public views on construction works at Ma Tau Kok and Kowloon Bay waters.**  
For event details, please refer to our coming issue of Newsletter and publicity.

## 我們重視你的意見 We Value Your Comment



「中九龍幹線通訊」是以月刊形式出版。如對本工程有任何疑問及意見，歡迎提供意見

郵寄 香港皇后大道西421號華明中心4樓 或  
電郵 **ckr@hyd.gov.hk** 或 **ckr@meinhardt.com.hk** 或  
致電 2859 0101 或  
傳真 2540 1580

“Central Kowloon Route Newsletter” is a monthly publication. Should you have any comments on the project, please send letter to 4/F Wah Ming Center, 421 Queen's Road West, Hong Kong Cross Harbour Tunnel  
send email to **ckr@hyd.gov.hk** or **ckr@meinhardt.com.hk** or  
call 2859 0101 or  
fax to 2540 1580

我們的網站  
Our website : <http://www.central-kowloon-route.com.hk>

## 中九龍幹線通訊

## Central Kowloon Route Newsletter

路政署



Highways  
Department



第十五期 - 二零零八年十二月  
Issue No. 15 – Dec 2008

## 通告 Message

在**今期通訊**，我們會介紹油麻地城市設計概念及油麻地警署的保育及一些初步研究結果。

我們於**2009年1月10日(星期六)**，舉行公眾論壇，詳情請參閱內頁。

In this issue we talk about the Yau Ma Tei Urban Design Concepts and the Conservation of Yau Ma Tei Police Station as well as some preliminary study findings.

We will conduct a public forum on 10 January 2008, Saturday. Please see the inside page for more details.

## 油麻地城市設計概念 Yau Ma Tei Urban Design Concepts

### 甚麼是城市設計？

我們都聽過城市規劃。城市規劃是有關如何分配不同的土地用途，適當地兼顧到環境保護、經濟發展、社區期望、景觀、交通及基建的要求，以迎合社區不同的需要。城市規劃在不同層面影響我們的環境，從策略性分配土地資源，到地區性考慮個別地點的土地用途和發展密度。城市規劃與城市設計緊密相連。當我們考慮到城市空間及週圍建築物的關係、街景、色彩和肌理時，城市設計便變得尤為重要。

城市設計是一門設計四周環境以提升生活及環境質素的藝術，亦是城市規劃的重要元素。對於香港這個人煙稠密的動感之都，城市設計尤為重要。

### What is urban design?

We have all heard of urban planning. It is about distribution of different land uses to suit the various needs of the community, and take into account environmental protection, economic development, community aspirations, aesthetics, and transport and infrastructural requirements. Urban planning deals with our surroundings on various levels, from strategic allocation of land resources, to local level of land use and massing on individual sites. Urban planning intertwines with urban design. When we talk about urban form and the relationship between different buildings, streetscape, colours and textures, urban design becomes more significant.

Urban design is an art of designing places for people to improve the livability and quality of the daily environment. It is one of the important elements in urban planning, especially for a compact and dynamic city like Hong Kong.

### 城市設計涉及到：

- 地方形象以及我們對附近建築群和空間整體的感覺；
- 我們是否可以容易和方便地從一處地方通往另一處、連接不同活動地點和休憩空間；
- 我們有沒有一個安全和舒適的步行環境；
- 怎樣設計公共空間和休憩地方給我們享用；
- 用甚麼方法來保育歷史建築及地區文化和佈局，並使市民更易享用；
- 如何設計及裝置街道或綠化設施以彰顯地區特色和提升環境質素。





## Urban design deals mainly with:

- place making and how we feel about the buildings and space in our environment;
- how easy we can go from one place to another, with easy and convenient linkages between places of interest, activity nodes and open spaces;
- how we can walk in a safe and comfortable pedestrian network in a comfortable environment.
- how open space is created for us to enjoy;

- how we conserve and make accessible local cultural characteristics and heritage buildings and their settings;

油麻地天后廟至油麻地警署一帶一直是當區居民集結進行市集或悠閒活動的好地方。附近眾坊街的名字可訴說這地方的傳統功能。這一地點亦是在九龍市區沿彌敦道的公共空間之一，在締造一個可持續發展的社區上有重要角色。

我們進行了一項城市設計概念研究，建議地區外觀、空間組合及應用模式，為將來詳細設計及建造打好基礎。

## 油麻地警署保育 Conservation of Yau Ma Tei Police Station

油麻地警署是一座三級歷史建築物，被公認為油麻地區的主要地標之一。中九龍幹線的首選走線可以避開拆卸警署，但警署的服務仍須搬往重置的新址。有見及此，我們覺得有需要進行一項更深入的研究，用最新的文物保育概念，來更適當地評價這歷史建築，再建議未來用途和訂定一份保育計劃書。

油麻地警署保育研究，在下列研究範圍內進行：

- 歷史 – 包括原來設計及後來改動的資料
- 地點 – 了解建築物的歷史、文化、社會及建築價值
- 保育及未來用途 – 考慮公眾參與活動中得到的意見，加上其他考慮，建議未來用途及訂定一份保育計劃書



如果你對油麻地的城市設計及油麻地警署的保育有任何提議或意見，請聯絡我們，亦歡迎參加2009年1月10日的「油麻地城市設計及油麻地警署保育」公眾論壇。



Yau Ma Tei area near Tin Hau Temple and Yau Ma Tei Police Station has been a local gathering place both as a market and a leisure area. The name of Public Square Street tells the traditional function of the place. This area is also one of the few remaining urban open spaces in the congested urban area along Nathan Road in Kowloon. It has the potential to play an important role in building a sustainable community.

We have carried out an urban design conceptual study to propose the overall character, composition and amenities of the area to form a solid foundation for the detailed design and construction.

The Yau Ma Tei Police Station is a Grade 3 Historic Building and has been recognized as one of the most significant local landmarks. Although the preferred alignment of CKR allows the Police Station to be preserved, police operation will still be required to be relocated to new premises. It has become apparent that a more involved study, in line with up-to-date conservation practice, would be necessary to give the historic building its due appraisal, and that the future use should be recommended with a corresponding Conservation Plan for adoption.

A conservation study was therefore commissioned with the following scope:

- Historical Study of Police Station – including study of design and subsequent modifications;
- Understanding of the Place – a study of the historic, cultural, social and architectural significance; and
- Conservation and adaptive re-use – taking note of public views gathered in previous engagement activities and other considerations, recommend options for adaptive re-use and prepare a Conservation Plan.

If you have any comments or suggestions on urban design at Yau Ma Tei and conservation of Yau Ma Tei Police Station, please let us know. You are also welcome to join the public forum on “Yau Ma Tei Urban Design and the Conservation of Yau Ma Tei Police Station” to be held on January 10, 2009.

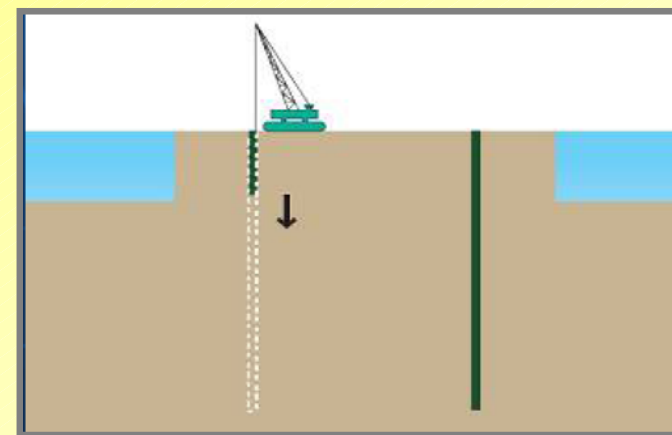
## 其他興建海底隧道的方法

## Other construction method of underwater tunnel

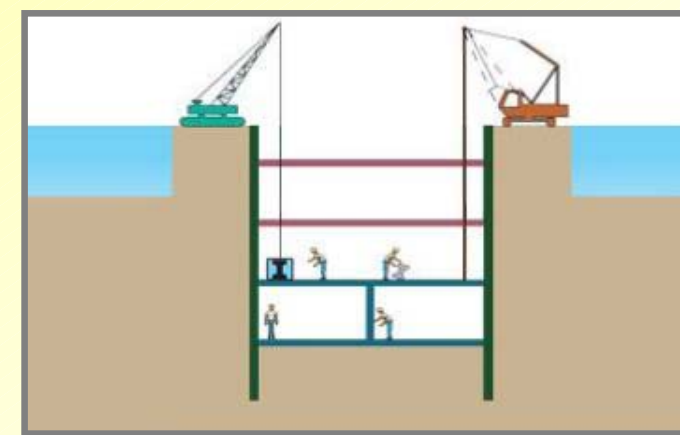
在之前的通訊，我們討論了不同隧道的建造方法。在今期通訊，將會介紹另一種我們現正考慮用作興建馬頭角至啓德一段海底隧道的建造方法。此段海底隧道，可採用隔牆技術以及明挖回填的方法在海中臨時建造的工地興建。

方法是首先在海中建造臨時工地，再建築隔牆以築成圍欄，接著挖走在隔牆內的泥土直到隧道的底部。在隧道建築完成後，在隧道上的空間將會回填至原來的海床水平。

興建這段隧道的方法仍在考慮中，我們將會在日後的通訊，提供更多資料。



興建隔牆  
Construction of diaphragm wall



興建隧道  
Construction of tunnel



馬頭角至啓德的海底隧道  
Underwater tunnel running from Ma Tau Kok to Kai Tak